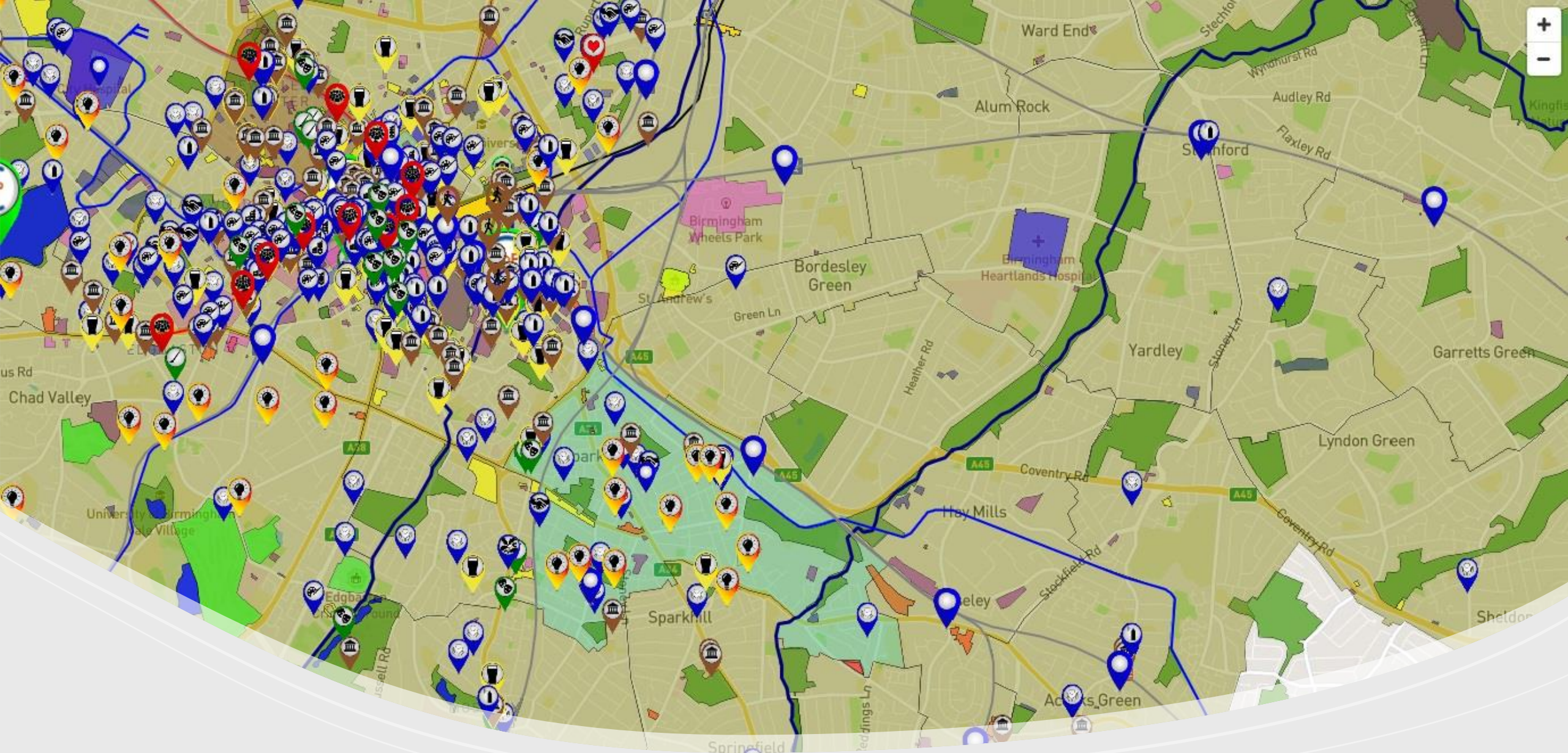


Sparkbrook mapped in a huge digital celebration of Birmingham's culture and community.

Are you a champion of your city?



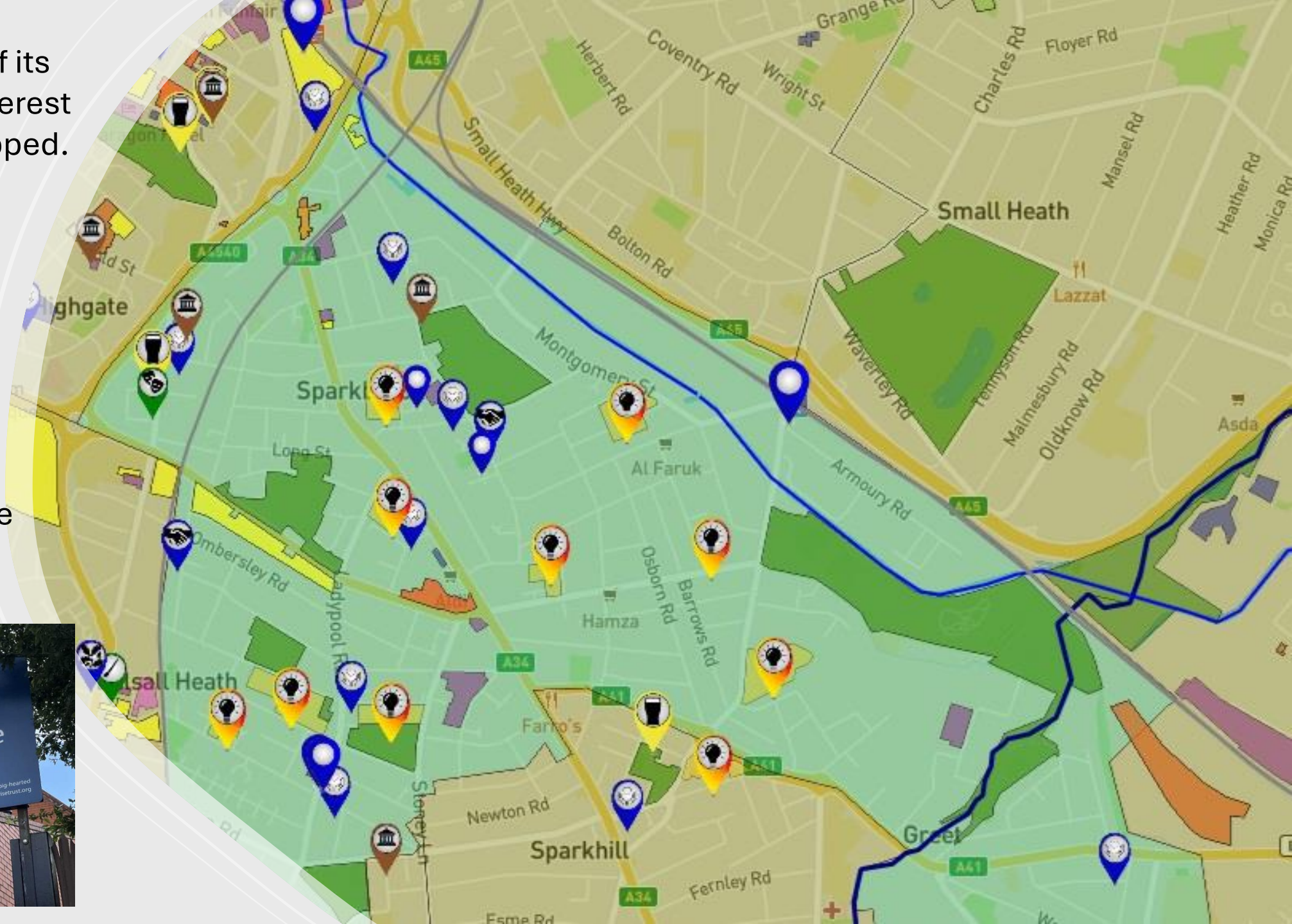


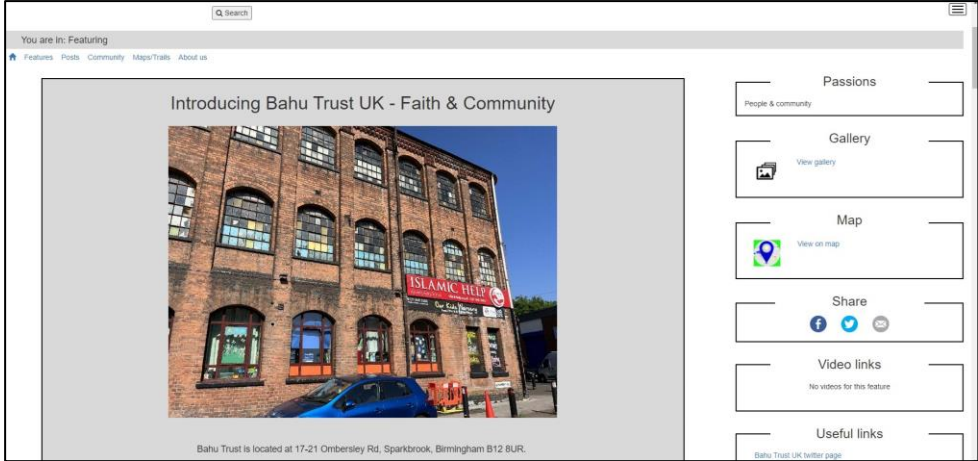
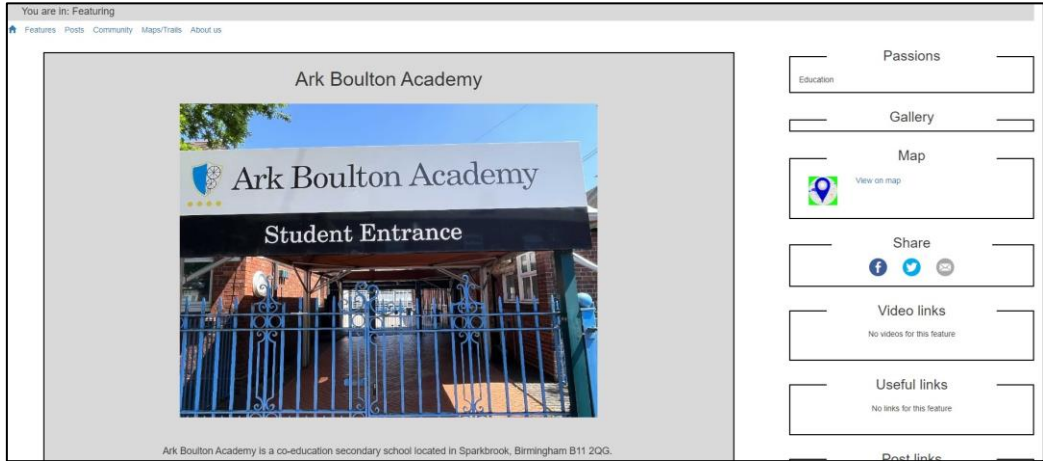
The ward of Sparkbrook mapped at www.BirminghamWeAre.com – a map now viewed between 60,000 and 100,000 times a month.

Sparkbrook and all of its places of cultural interest and importance mapped.

Promoting the neighbourhood to visitors and business.

A great way of engaging and involving local people in their place.





Here's just a small selection of what is mapped and featured for the ward of Sparkbrook. All available to be updated with content from the community.



Farm Park



Farm Park is a lovely open green space in Sparkbrook, Birmingham B11 1HH

Close feature



Link to the Feature Close

Farm Park, Sparkbrook

Farm Park is a lovely open green space in Sparkbrook, Birmingham B11 1HH

Source: Office for National Statistics licensed under the Open Government Licence v 3.0 Contains OS data © Crown copyright and database right 2024

© Mapbox © OpenStreetMap Improve this map

street view satellite view



Q Search



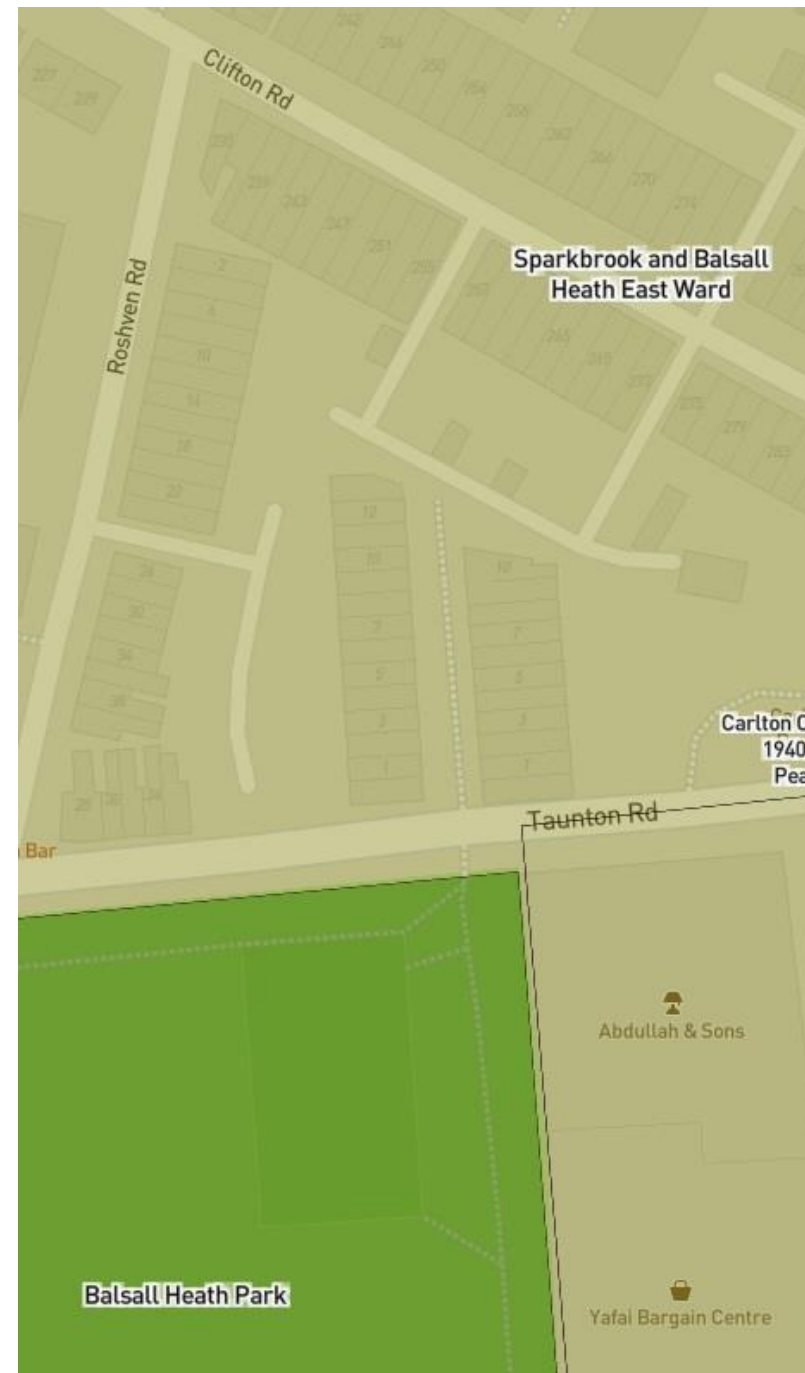
Carlton Cinema bombing 1940 - Memorial Peace Garden



Carlton Cinema bombing 1940 - Memorial Peace Garden, Birmingham.

Close feature

This green open space is set aside as a Peace Garden to remember those killed in the bombing of the Carlton Cinema during which 19 people lost their lives.



With access to one of the largest social media accounts promoting the city, its community and its culture.



Birmingham We Are @BirminghamWeAre · May 22

Promote



Peace Garden in Sparkbrook in memory of those killed in the bombing of the Carlton Cinema in 1940 where 19 people lost their lives receives the care it deserves from BCC councillors and Friends of Sparkbrook. Brilliant work everyone. Take our feature at: birminghamgems.com/kms/dmart.aspx



4

8

19

1.2K



The complete package:

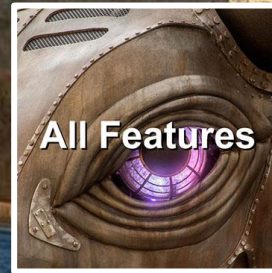
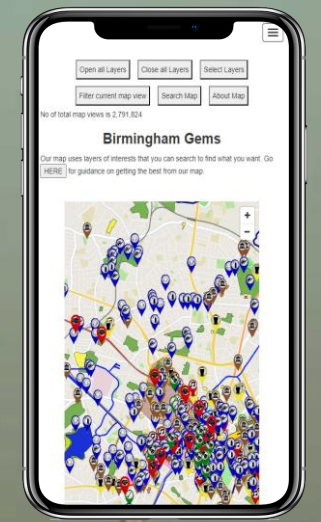
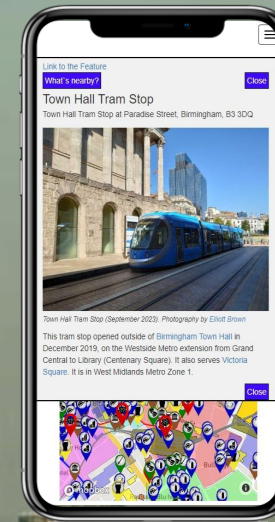
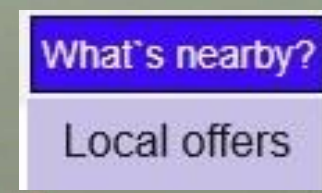
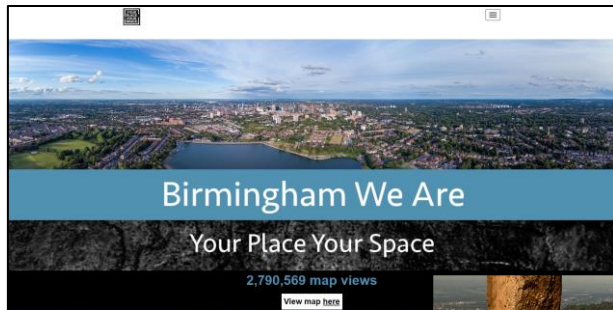
Birmingham's most comprehensive and regularly updated repository of digital content now scaling across the region.

Features; maps viewed between 60,000 and 100,000 every month; trails; galleries; multiple branded platforms; full social media support.

Regularly updated content held in an accessible and searchable resource library with a community engaged, connected and empowered to continue to create and share more.

Options for growing revenue include:

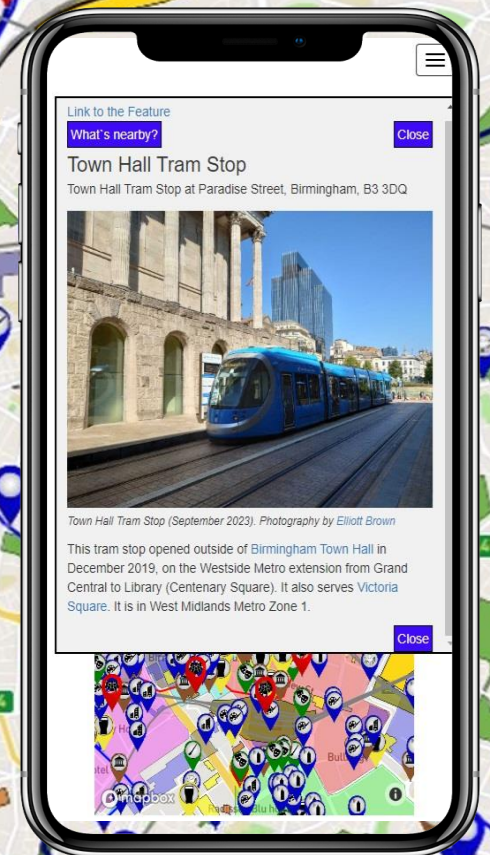
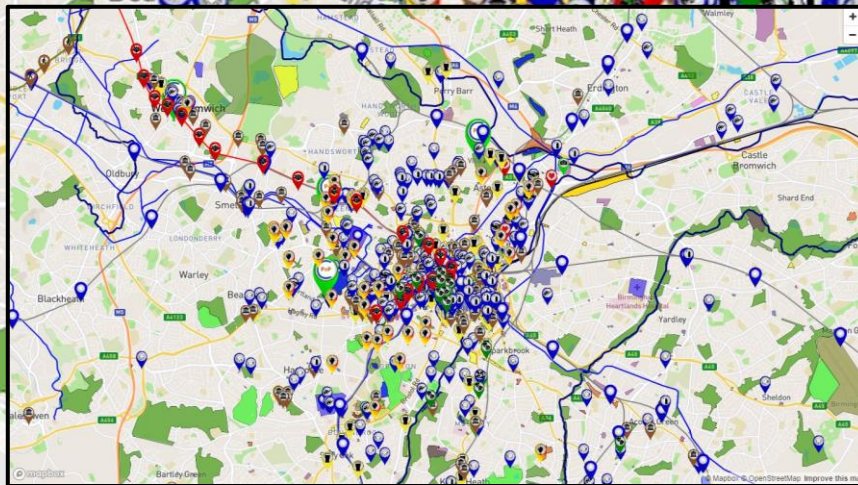
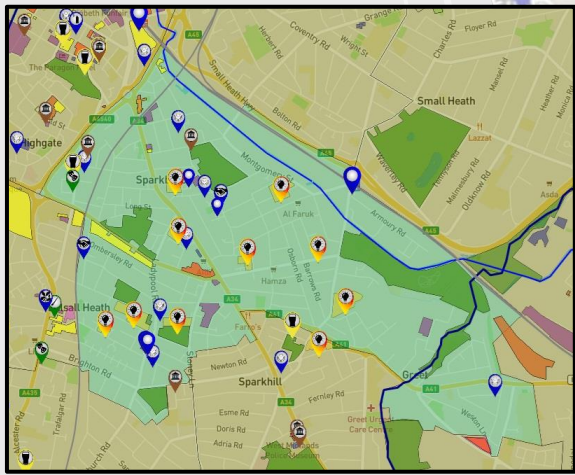
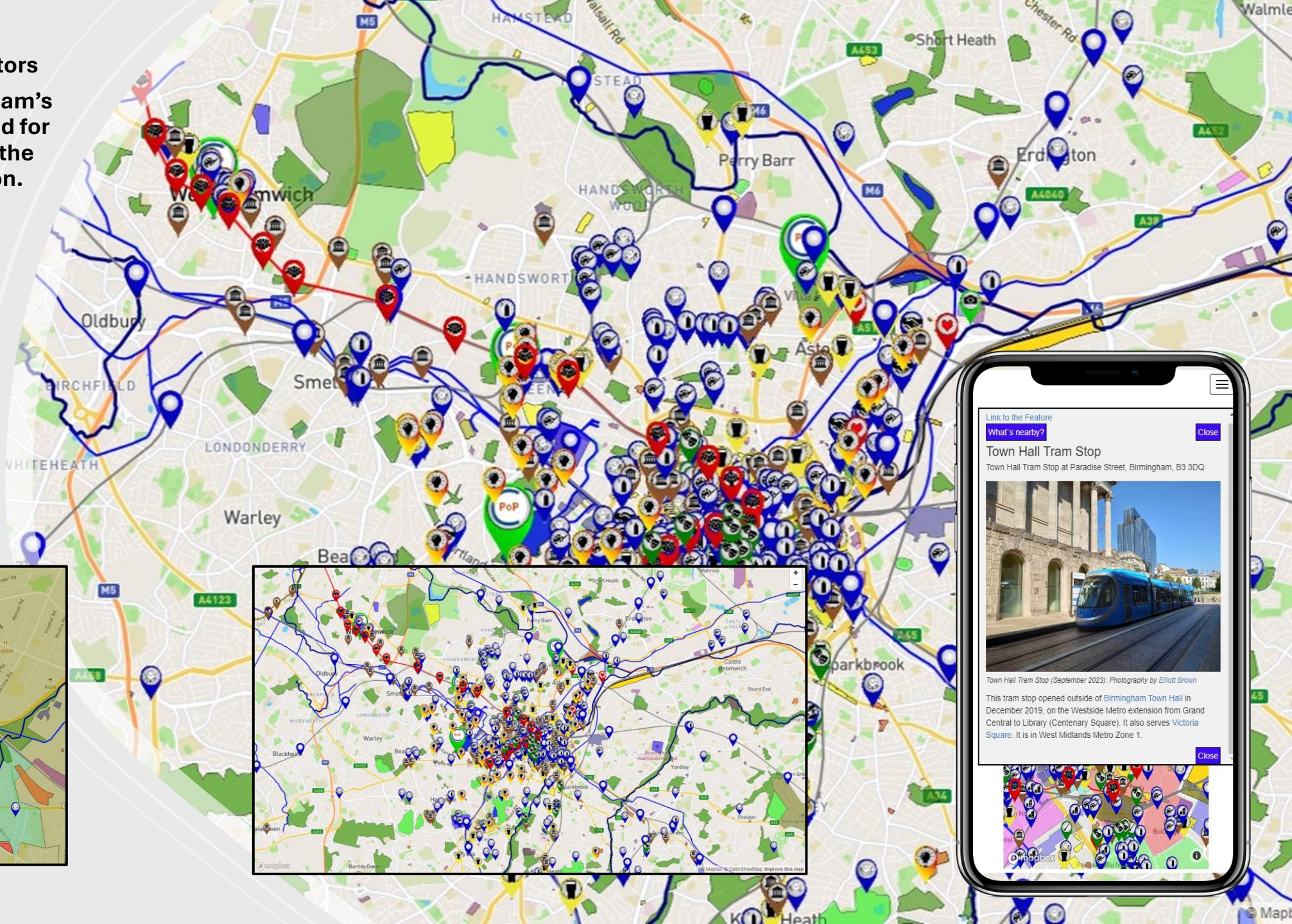
- License agreements.
- Branding.
- Corporate sponsorships.
- Advertising.
- Scaling into other regions.
- Digital applications.



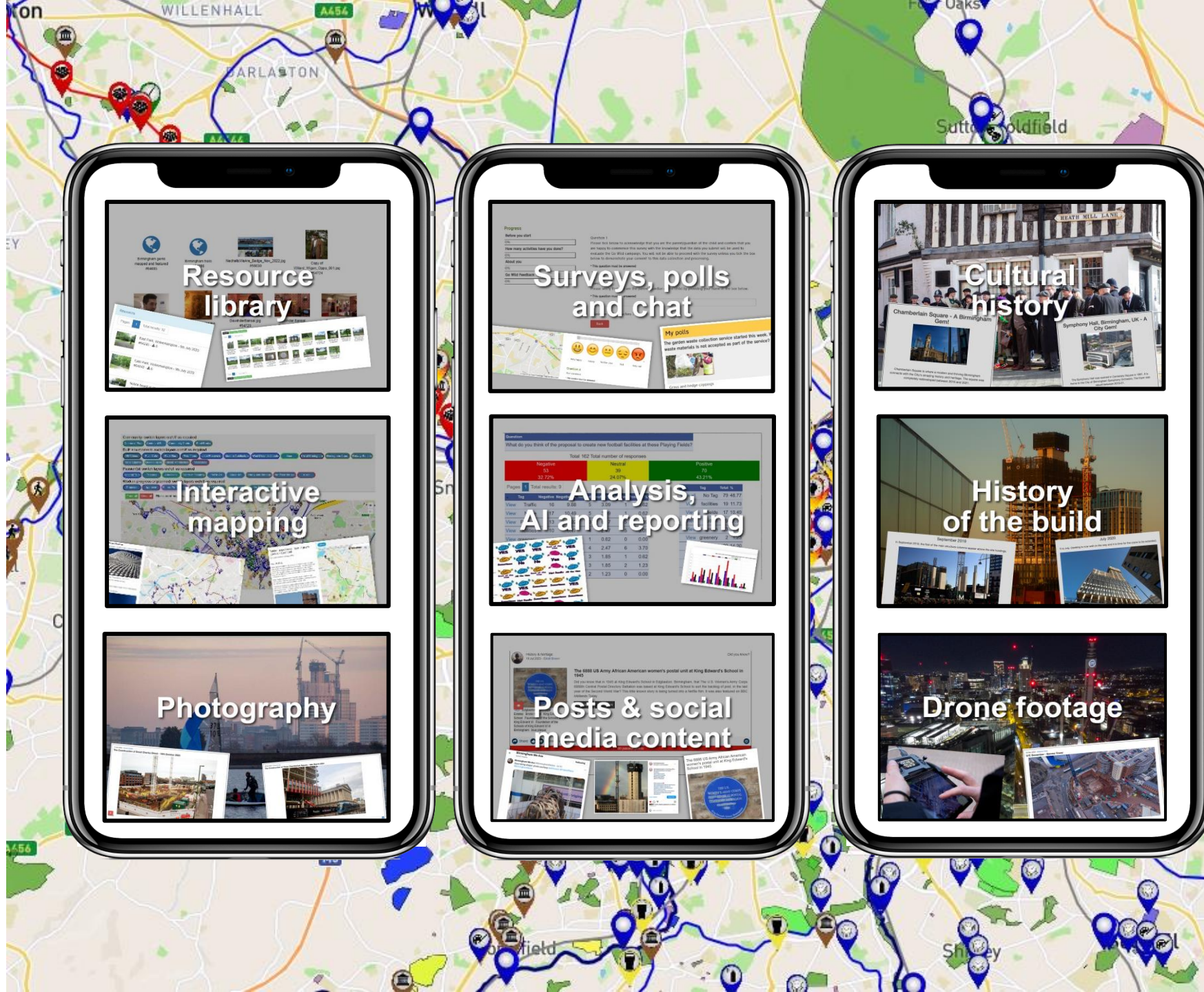
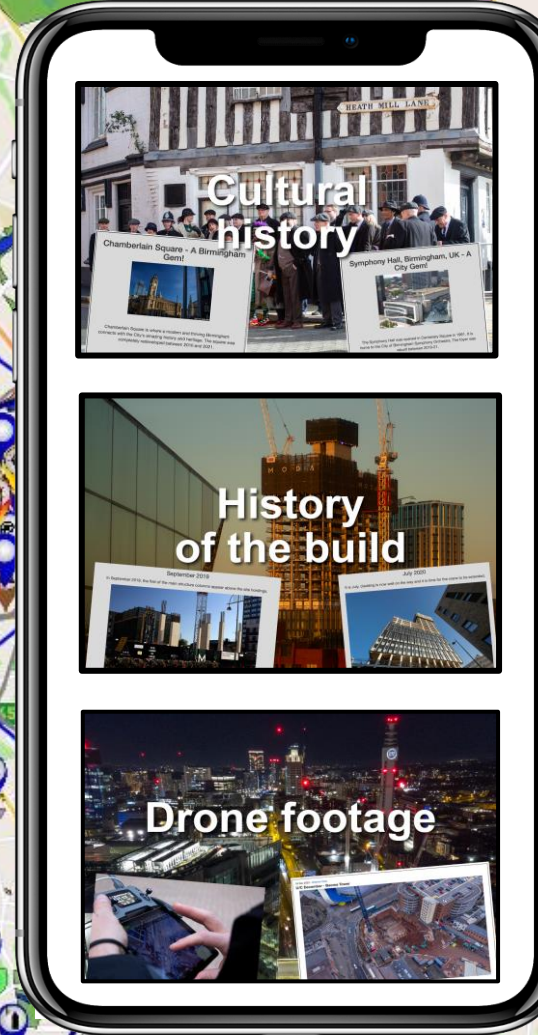
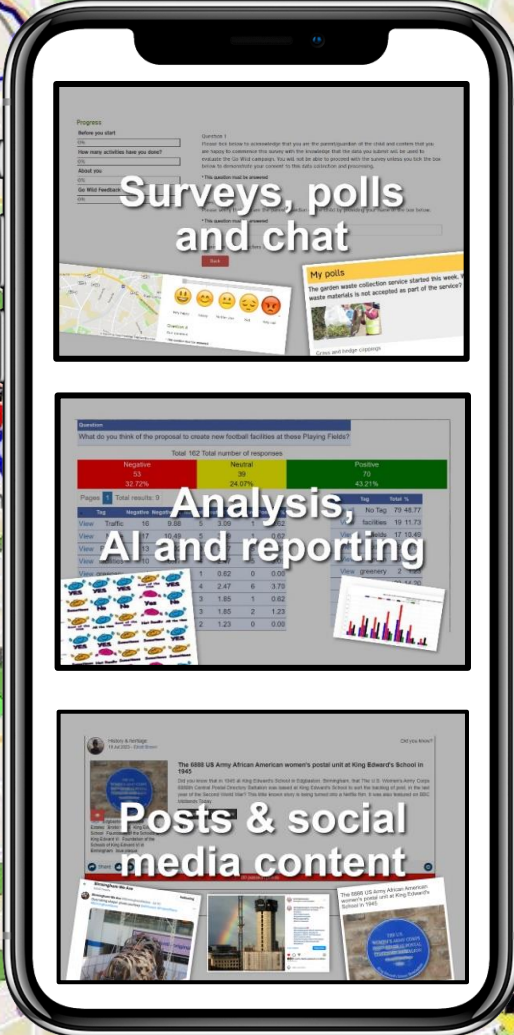
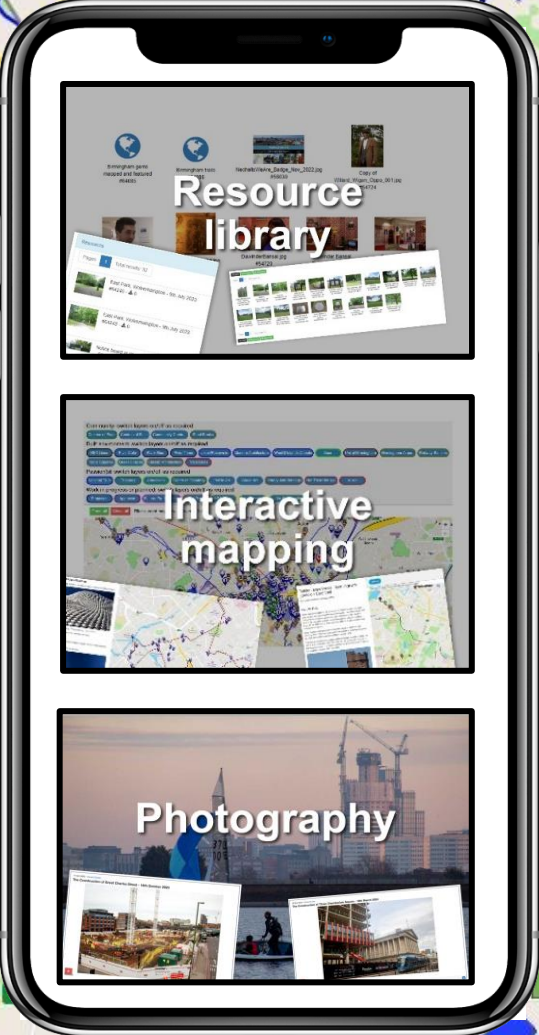
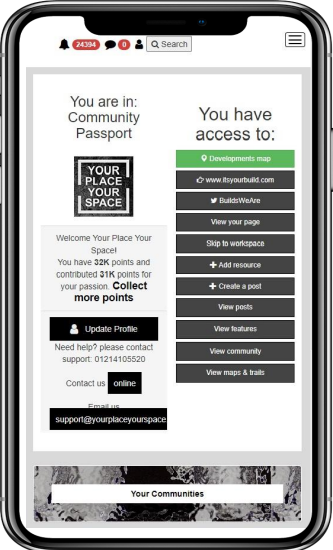
Application: Increasing visitors
Digital coverage of Birmingham's
culture mapped and featured for
promoting Birmingham and the
region as a visitor destination.

The package includes a number of developed applications for use on public transport, via QR codes and touch screen devices.

These applications are all ready for full beta test.



How it works:



Community
Passport

Community passport

Values
Shared

YOUR
PLACE
YOUR
SPACE

Update your profile [HERE](#)

Welcome YourPlaceYourSpace
You have 28K points and contributed
27K points to various causes
Contact your profile [HERE](#)

- Your communities
- Your resources
- Your posts

- Developments map
- Birmingham Gems map
- Community passport 
- Community workspace
- Manage resources
- Resource library
- Create feature
- Create post
- Mapping
- Manage conversations

for digital skills

for shared prosperity

for culture & creativity

about
points

Community
Passport®

This digital initiative looking for a home.

Including:

- Map of Birmingham's culture.
- Map of Birmingham's real estate.
- Community Passport.
- Regular community generated content.
- Full social media coverage.

Contact:

Jonathan.

Jonathan.bostock@yourplaceyourspace.com.

07432 637322

